

Keeping Dens Active and Safe



Bears and Webelos

Joe Hern
Webelos Den Leader
Pack 4, Hingham
October 21, 2020



What this presentation is mostly about:

- Actually getting together as dens
- Meetings and activities outdoors



What this presentation is not much about:

- Virtual meetings

We may be meeting tonight virtually, but my goal is to help our Bear and Webelos dens to meet safely in person.





The 2020 Environment

- Indoor gatherings are just not feasible
 - 125 sq. ft. per person = 1,000 sq. ft. per 8 persons = a room 25' x 40'
 - 8 persons = minimum 2 adults, leaving only 6 Cubs
 - Your best opportunity to keep Cub Scouting active is in the dens, not in the pack
- Meetings and activities should take place outdoors – in backyards, parks and conservation areas

REOPENING SCOUTING

WHAT YOU NEED TO KNOW



BOY SCOUTS OF AMERICA
MAYFLOWER COUNCIL



Conditions can change rapidly in the present environment!
Before planning/starting any activity, please

- Review most current BSA and Council guidance:
<https://www.mayflowerbsa.org/covid-19/>
- Check state and local guidance/regulations
City/town, health dept., etc.
- Maintain contact with your Charter Organization
- Questions/concerns – email: covid19@mayflowerbsa.org

Meeting virtually?



- Do it sparingly
- Suggested purpose: individual Cubs do a show-and-tell of something they've built, such as a Baloo the Builder project, or a Make it Move Rube Goldberg machine, or a Pinewood Derby car
- Keep it short and sweet!



<http://usscouts.org/advance/cubscout/bear-core.asp>

- Bear Claws
- Bear Necessities
- Fellowship and Duty to God
- Fur, Feathers, and Ferns
- Baloo the Builder
- Paws for Action (Duty to Country)



<http://www.usscouts.org/advance/cubscout/webelos.as>

- Cast Iron Chef
- Duty to God and You
- First Responder
- Stronger, Faster, Higher
- Webelos Walkabout



<http://www.usscouts.org/advance/cubscout/webelos.as>

- Building a Better World
- Duty to God in Action
- Outdoor Adventurer
- Scouting Adventure

Backyard den meetings

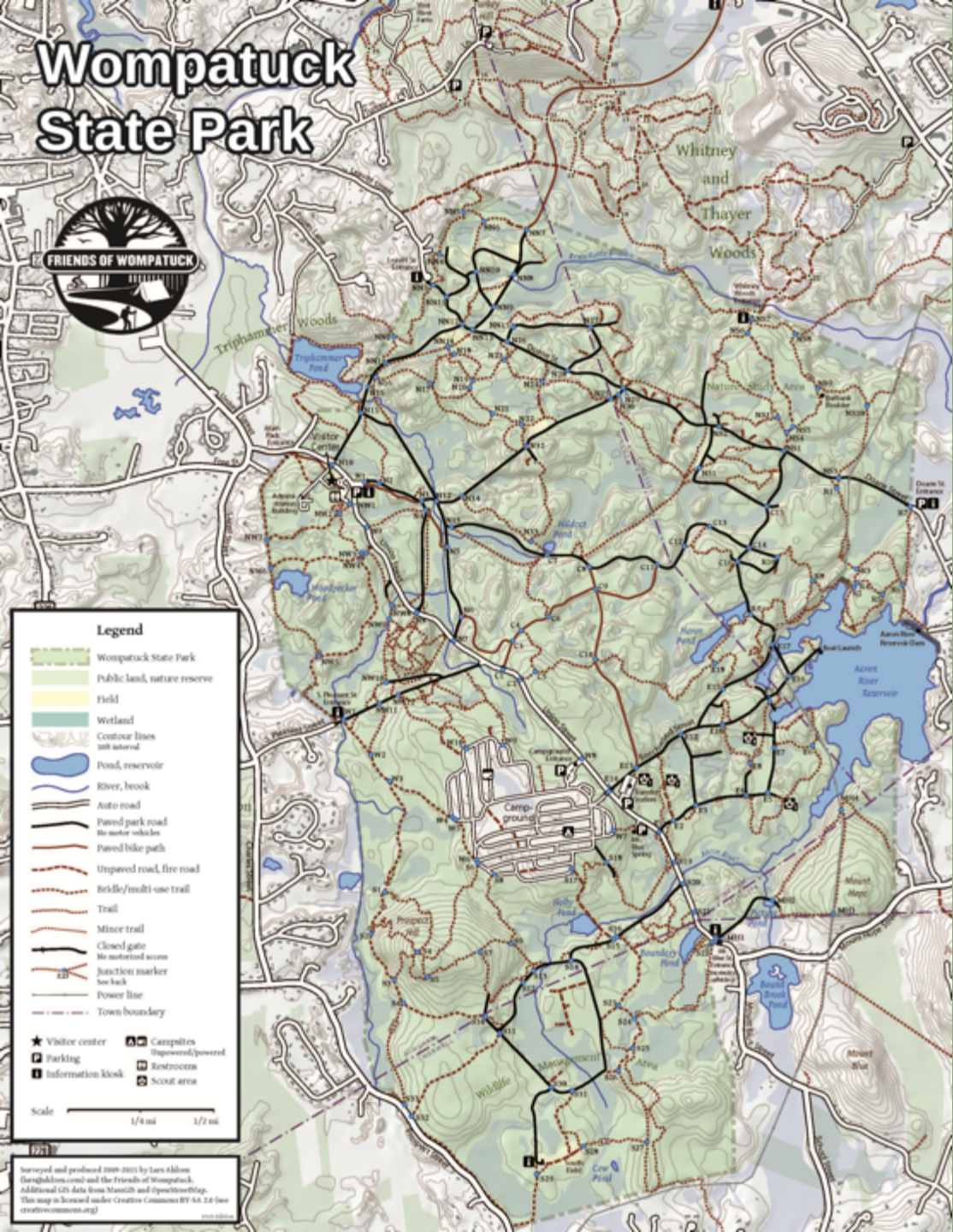




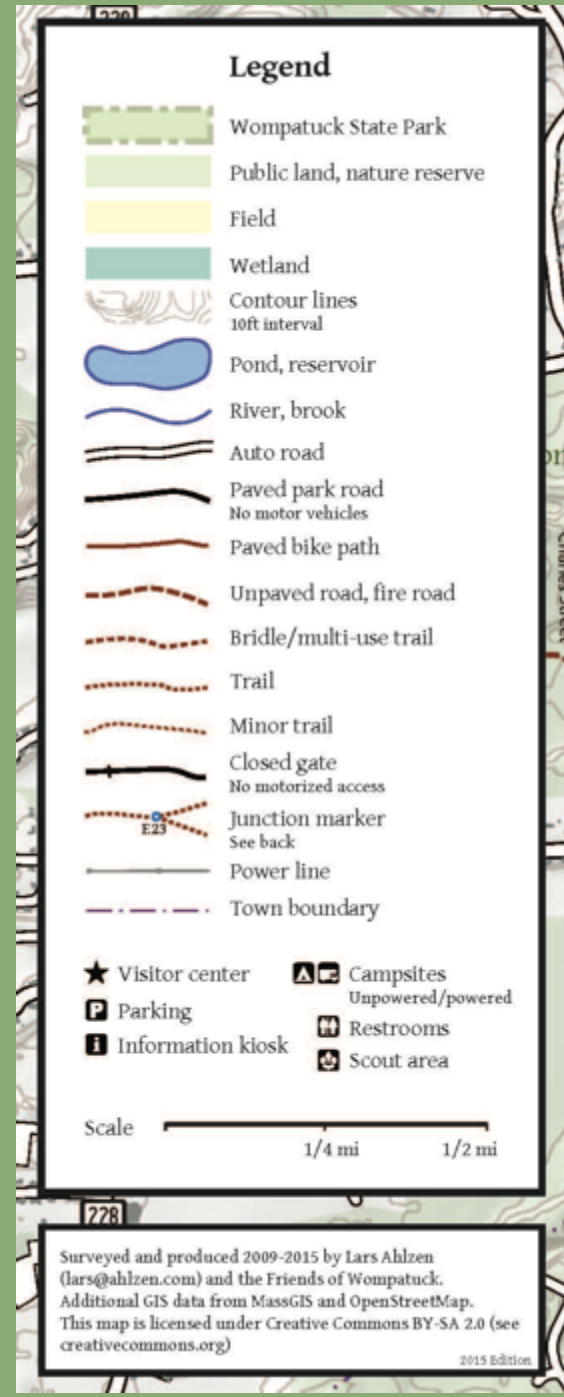
Cold weather meetings

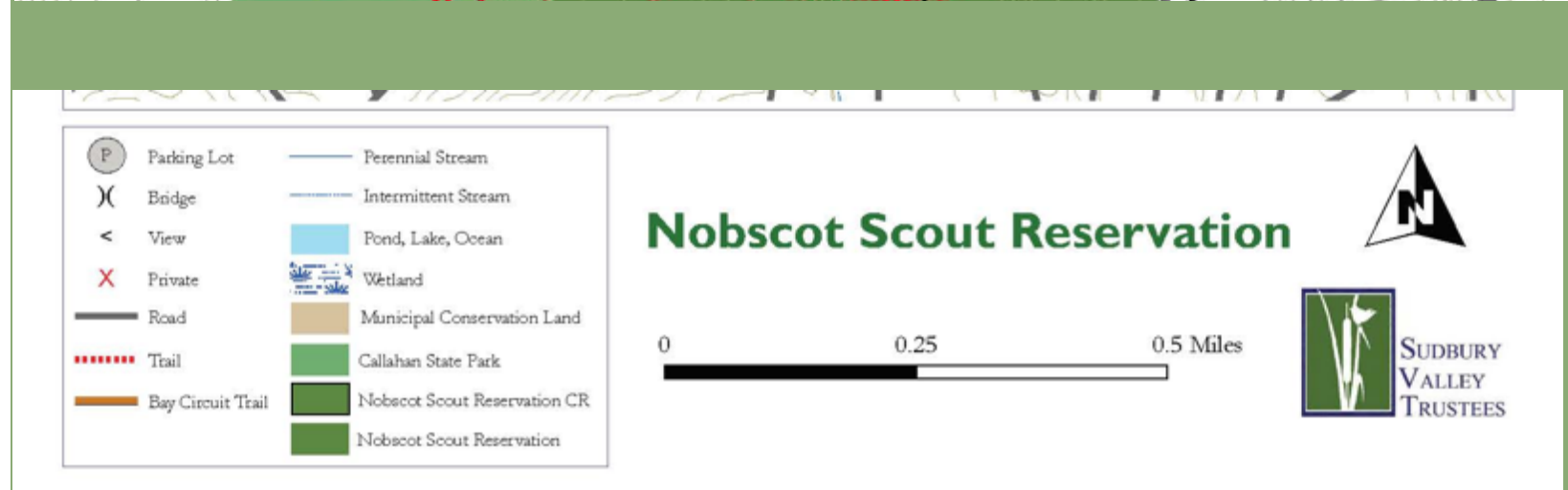
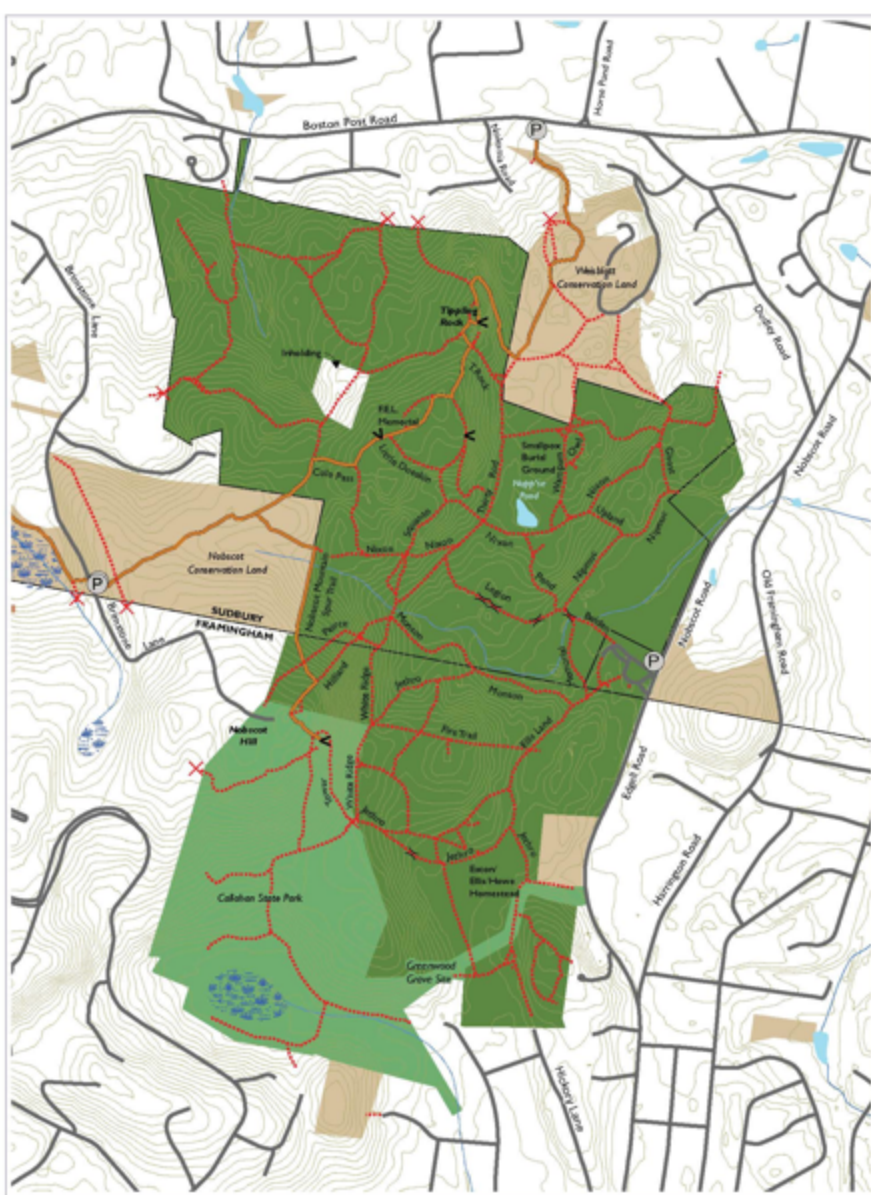
- Use a backyard firepit (where permitted)
- Meet at a park that permits outdoor fires
- Provide hot beverage – cocoa, hot cider, herb tea

Wompatuck State Park



Learn how to read a map, then use the map in its setting





Fly gliders – have contests on distance, height and loops



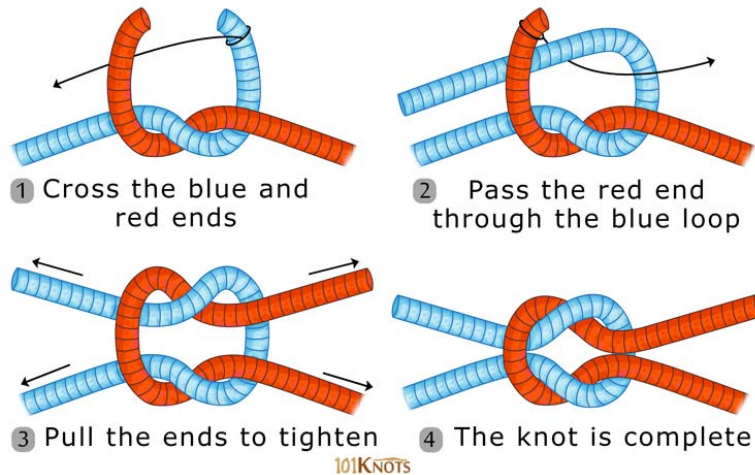
Guillow's *Sky Streak* balsa glider \$4.79



Guillow's *Starfire* balsa glider \$3.79

Paul K. Guillow, Inc. phone: 781-245-5255 <https://www.guillow.com/contact-us.aspx>

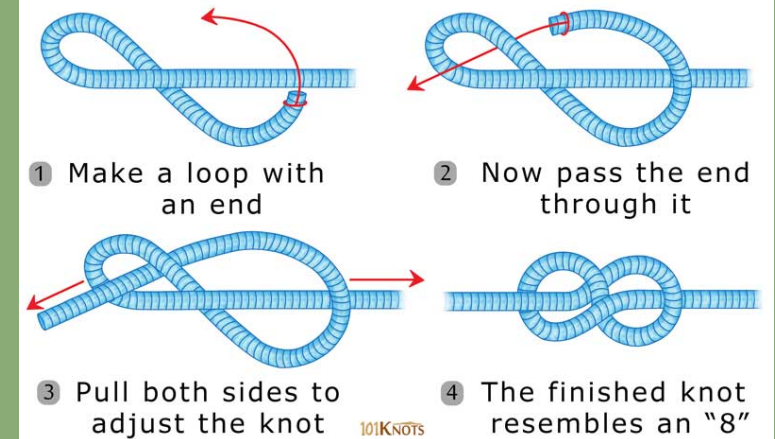
Square (Reef) Knot Instructions



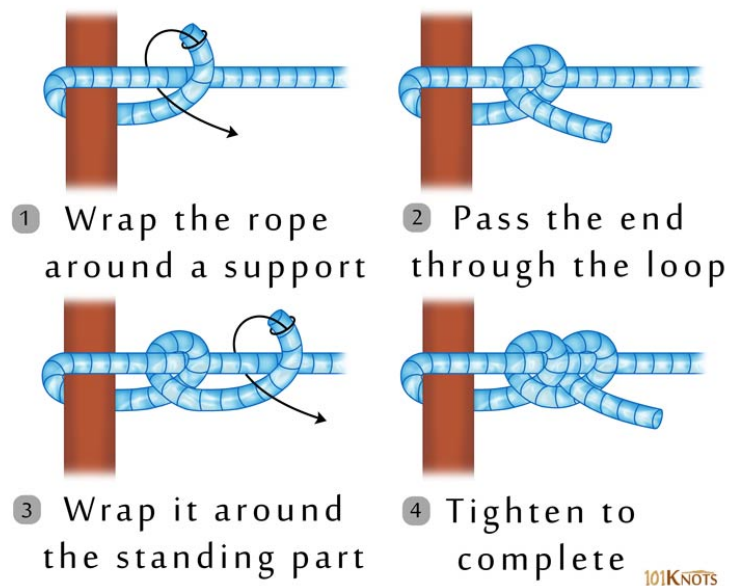
Hold a knot clinic

- Give each Cub sheets with illustrations like this (maybe 2 knots per 8 ½ x 11 sheet, or print single large copies and mount on poster-board)

Figure 8 Knot Instructions

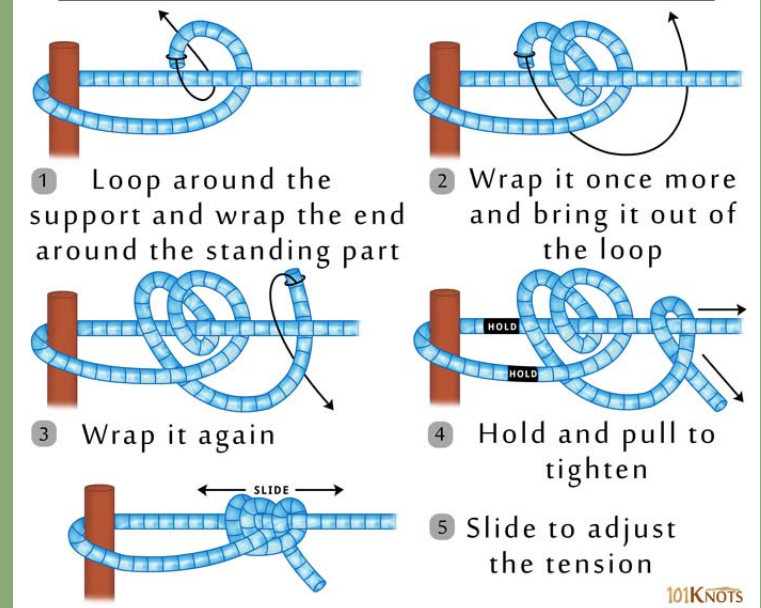


Tying Two Half Hitches



- Also give them 3' lengths of ¼" or 3/8" line
- Teach them how to whip end (tape or controlled burn okay)

Taut Line Hitch Instructions





Outdoor service projects

- Scouting for Food
- Fall cleanup at your sponsoring organization (if permitted) or other community site, or for elder neighbors





Go camping!

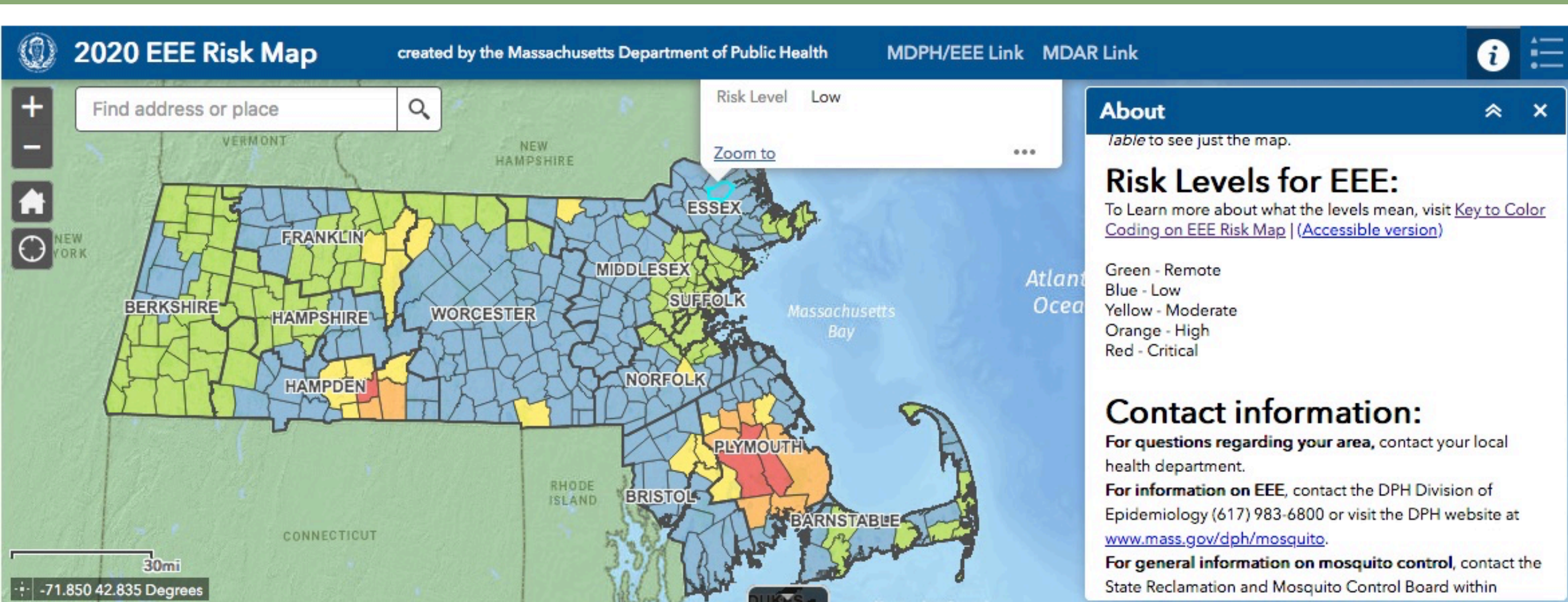
- Webelos are eligible for overnight den camping.
- Bears can camp as part of pack overnight which, due to numbers restrictions, might be for all practical purposes den camping.
- Camp Resolute (Bolton), Nobscot Scout Reservation (Sudbury) and Camp Squanto (Plymouth) are open weekends.
- Besides Youth Protection and COVID guidelines, overnight camping requires at least one BALOO trained leader.
- “Day camping” should not require a BALOO trained leader, and might be more suitable as the weather gets colder.
 - Build the day around a hike and other outdoor activities
 - Work on advancement adventures (Outdoor Adventurer, Iron Chef, Bear Necessities and Fur, Feathers, and Ferns,
 - End the day with a campfire, hot meal and hot beverage
 - Instead of sleeping in a tent, sleep at home



Mayflower BSA use of campsites during COVID 19 restrictions (excerpts)

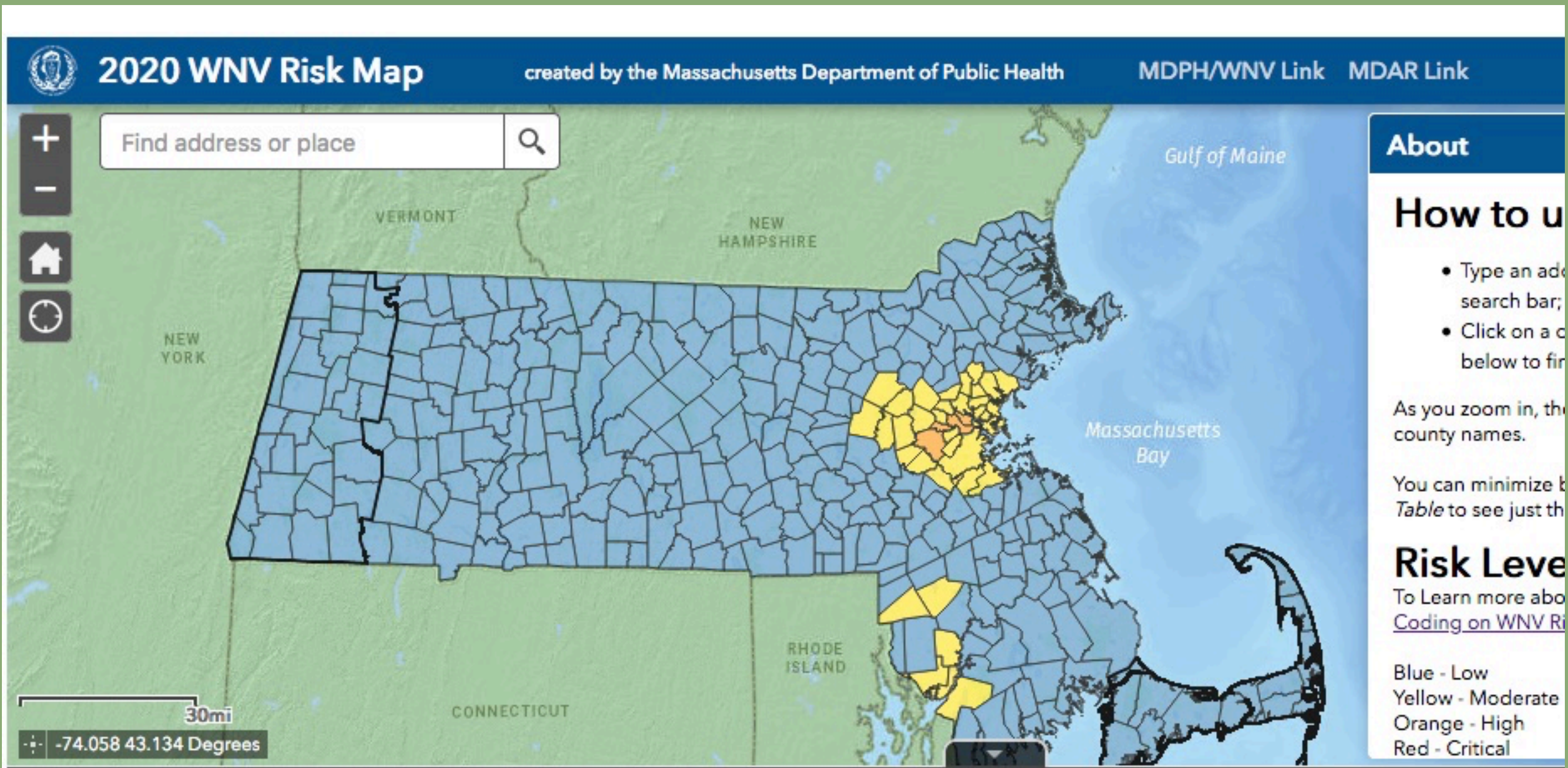
- Tent camping only (cabins, indoor facilities and common areas are closed).
- Campsites must be spaced no less than 20 feet apart as measured by the closest edge of each neighboring site.
- Campsite occupancy is limited to a maximum of 12 people.
- Activities between or among more than one campsite group are not permitted.
- Disinfect latrines surfaces before and after each use by unit or Scout.
- Plastic or Metal picnic tables and other high-touch areas within campsites must be sanitized between each use by the user of the campsite.
- Only household members may occupy same tent (i.e., adult partner and Cub)
- Food should not be shared. (NB: good opportunity for Webelos to earn Iron Chef adventure – budget, plan, prepare and cook over campfire a balanced meal for Cub and adult partner).

Check state DPH mosquito maps during mosquito season



<https://www.mass.gov/info-details/massachusetts-arbovirus-update#eee-risk-map->

<https://www.mass.gov/info-details/massachusetts-arbovirus-update#wnv-risk-map->



**There is no bad
weather...**





... only bad clothing

Do Your Best



to keep your dens active and safe!

Joe Hern
jhern@jhernlaw.com
cell: (617) 773-1919