

# 2019 Camp Resolute 100<sup>th</sup> Anniversary Camporee



## Camp Resolute 100<sup>th</sup> Anniversary Camporee October 11 – 13, 2019

Hosted by Troop 1 Stow

# 2019 Camp Resolute 100<sup>th</sup> Anniversary Camporee



Camp Resolute. July 24<sup>th</sup>, 1928

**Theme:** Celebrating 100 Years of Camp Resolute

**Location:** Camp Resolute, Bolton Massachusetts

**Dates:** October 11 - 13

**Contact:**

**Camporee Chair:**

Gary Bernklow, (978) 886-5650 [ceo@tosalumni.org](mailto:ceo@tosalumni.org)

**Camp Resolute 100<sup>th</sup> Anniversary Camporee  
Hosted by Troop 1 Stow**



# 2019 Camp Resolute 100<sup>th</sup> Anniversary Camporee

## Registration:

- Present Part A and B medical forms to designated camporee staff at the Administration Building as soon as possible after arriving. We would like to have all the health forms of the attending scouts available upon necessity from the Scout Leader attending the camporee.
- Submit the completed registration form and all fees no later than the cracker barrel on Friday, October 11th, 2019

## Cost:

### **\$25.00 per Scout and Adult**

1. Complete registration online.
3. Due to limited budget and planning requirements there will be **NO REFUNDS**. You may transfer registration fees to another participant.
4. Make checks payable to "Mayflower Council".

## Campsite Selection:

During the Friday of the camporee staff at the Resolute Administration Building will direct units to a campsite area, which should accommodate the unit's corresponding size.

Exact campsite locations are still being finalized at this time.

All meals will be the responsibility of the registered units.

All campsites are expected to be clean, neat, and orderly. There will be absolutely no tolerance for trash or garbage of any kind in any part of the camp.

## All units should bring:

- Roster of participants
- Part A and B medical forms
- US and Troop flags

## Site Rules:

- Do not cut live trees.
- Do not disturb any camp property. Do not dig any holes or trenches. Use only

# 2019 Camp Resolute 100<sup>th</sup> Anniversary Camporee

existing fire pits, if available, for campfires. If your site does not have a firepit, you are permitted the use of a charcoal grill and/or Scout-approved stoves.

- Follow BSA “Leave No Trace” camping guidelines.
- Please park vehicles outside the Camp Resolute gate and carry your gear to the campsite. There will be several carts available to help with that task, but we suggest bringing your own carts or wagons to help transport gear.
- Please do not park vehicles in individual campsites except for loading/unloading gear.
- Please use the available Camp Resolute latrines
- Residential camp rules are to be followed. For a complete list of rules for Camp Resolute, please visit [www.mayflowerbsa.org](http://www.mayflowerbsa.org).

## **Webelos Scout Participation:**

The Camporee is open to overnight camping by Webelos II Scouts who are sponsored by a Boy Scout Troop. Webelos II's will be subject to the same fee schedule as other Scouts & adults. CM/DL's must coordinate Webelos II's Camporee participation with a sponsoring Boy Scout Troop. SM's are responsible for monitoring Webelos II visitation at the Camporee and registering Webelos II Scouts with Camporee staff. Webelos II Scouts will be eligible for Camporee patches.

## **PROGRAM:**

There are 5 activity locations, each covering an historical era and each with 4-5 different activities being conducted at the same time. The historical eras covered are:

### **Earliest Days**

At and near the cooking area near the parade field at the entrance to camp

### **40's – 50's**

Located at Greg Montalbano Archery Pavilion

### **60's – 70's**

At the handicraft area, Buster's Place (across from the basketball court)

### **80's – 90's**

At the Scoutcraft area, the former Mohawk campsite (past the rifle range)

### **Current Era**

The parade field near the swimming area and adjacent to the Kevin Lewis training room (beneath Whitman Hall)

Please refer to the PROGRAM page for descriptions of individual activities.

# 2019 Camp Resolute 100<sup>th</sup> Anniversary Camporee

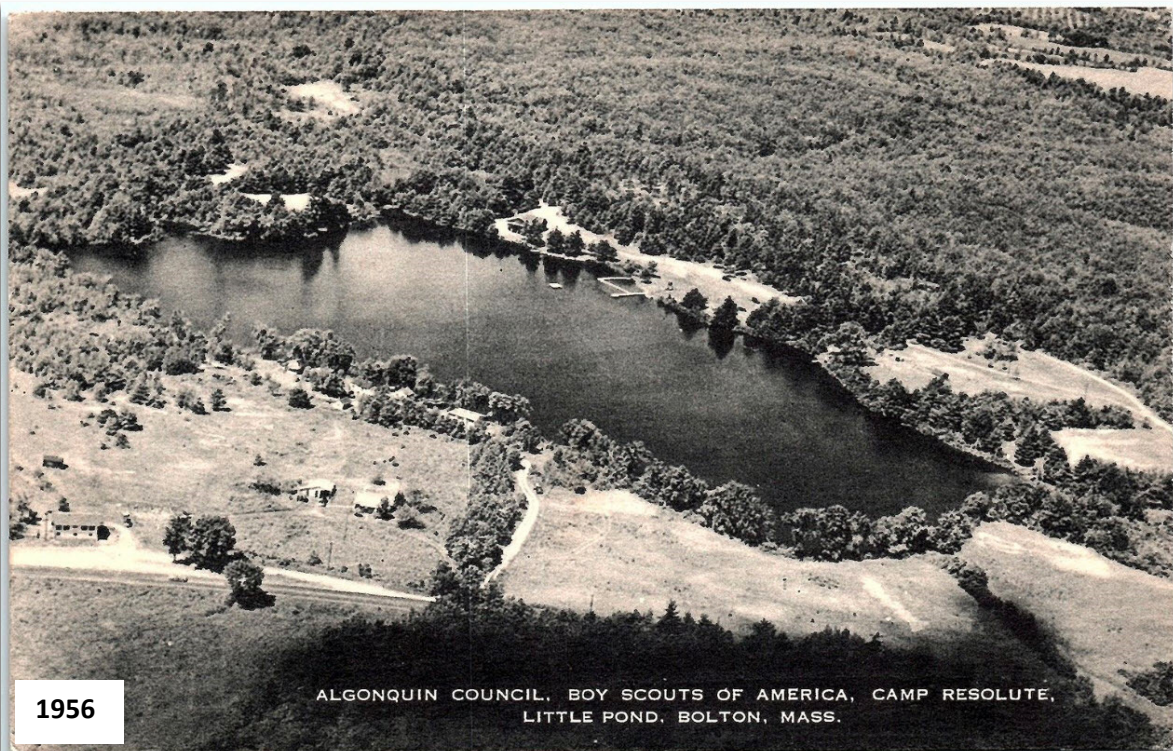
## Camporee Special Events:

The following events and activities will occur outside of the activity areas described above.

***Camp Resolute Historic Walking Tour:*** For anyone who wishes to learn more about the history of Camp Resolute. This tour will include the meaning behind each campsite name, the history of the Lemon Squeezer, stories behind building and monument dedications, and more. The tour will begin at the entrance gate near the Resolute map and proceed on foot around the entire camp, including a hike to the Lemon Squeezer. The tour will begin at 1:15pm.

***Resolute History Quest:*** Each unit will be presented with their first clue on Saturday morning at 9:30. Your unit will have to follow that clue to their next clue. Units can use any method to decipher their clues. Keep track of the clue locations but leave the clues where they are for the next participant. The last clue will contain a phrase that you will need to know to claim your prize.

***Green Gizmo:*** Beginning Saturday morning at 11 am, be sure to listen for the loud “BZZZZZZZZZZ” over the camp-wide PA system. When this is heard, all participants at each activity area are to stop what they are doing and shout “Who’s Got The Green Gizmo?” The Green Gizmo is a green thing that will be hiding in plain sight in each activity area. The Scout or Scouter that finds it will have the chance to win some great 100<sup>th</sup> Anniversary swag by answering a Camp Resolute history question. The buzzer will go off 4 times between 11am and 3pm.



# 2019 Camp Resolute 100<sup>th</sup> Anniversary Camporee

## Camporee Schedule

### Friday

No Events

### Saturday

07:00 am	Reveille
07:00 – 08:45 am	Registration
09:30 am – 4:00 pm	Activity areas open (See Activity map and descriptions)
10:00 am – 3:00 pm	Shooting Ranges open – Shotgun and Muzzleloading
11:00 am	First “Green Gizmo” buzzer (see description in packet)
Noon – 1:00 pm	Lunch with unit
12:15	Dedication of memorial plaque for Tim Roth at COPE
1:00 pm	Second “Green Gizmo” buzzer
1:15 - 2:30 pm	Camp Resolute Historic Tour (meet at Entrance Gate)
2:00 pm	Third “Green Gizmo” buzzer
3:00 pm	Fourth “Green Gizmo” buzzer
4:00 pm	Activity areas closed
4:45 pm	Formal Parade and Retreat (Meet in front of Whitman Hall)
5:00 – 6:30 pm	Campfire in the Amphitheatre, closing ceremonies, awards

# 2019 Camp Resolute 100<sup>th</sup> Anniversary Camporee



1920 America's Cup. The Resolute and the Shamrock IV

## Program Areas

### 1. Earliest Days

**Location:** Parade field near the cooking area

Scouting in America began in 1910. The BSA received its first Congressional charter in 1916. Camp Resolute first started operating in 1919. Learn some of the skills shown in the first Scout handbooks and use some of the tools the first Scouts used every day.

**Two-Man Saw** – Learn how to handle a 5-ft, double handled hand saw. See how fast you and your partner can saw through a huge log. This was a common tool 100 years ago

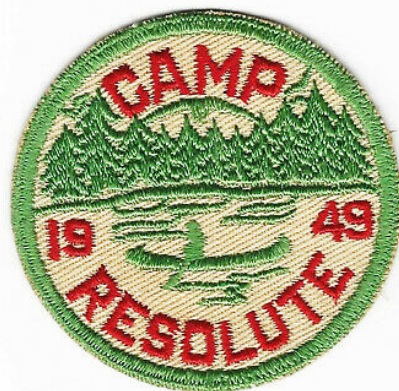
**Hand Wrestling** – Learn the ancient practice of hand wrestling, an activity found in the original Scout handbook. Use strength and balance to move your opponent.

**9 Useful Knots** – Earning Tenderfoot in 1916 was a difficult task. These “9 useful knots” were required. Can you tie them all?

**No Matches** – Start a fire using a bow drill. Another skill taught in the earliest Scout literature.

**Flagpole** – How high is the flagpole on the parade field. Using skills demonstrated in the original Scout handbook, get a perfect measurement.

# 2019 Camp Resolute 100<sup>th</sup> Anniversary Camporee



## 2. 40's – 50's

### Location: Greg Montalbano Archery Area

During WWII, Scouts were called upon to serve as volunteers for civil defense. In 1942, President Roosevelt made the Boy Scouts “Official Dispatch Bearers” for the Office of War Information and Scouts across the country (and in Britain) held rubber and scrap drives for the cause. Scout participation exploded following the war and into the 50's.

**Taught Line Hitch** – This incredibly useful know was first introduced in the 5<sup>th</sup> Edition of the Scout handbook in 1948. Using this know, and a couple of others, you and your patrol will create a majestic sunburst of rope!

**Enigma** – Decipher the message with common cryptography techniques used during the second world war.

**Iwo-Jima** – You and your patrol have been assigned the task of raising the flagpole on Mt. Suribachi. You will not be allowed to set foot within the circle and must raise the pole using only the ropes provided.

**Hand Axe Relay** – Each Scout gets one chop before handing the axe to the next Scout in your patrol. How long will it take you to get through the log?



# 2019 Camp Resolute 100<sup>th</sup> Anniversary Camporee



## 3. 60's – 70's

### Location: Buster's Place (Handicraft Pavilion)

Scouting during the 60's and 70's was groovy and far out, man! Scouting saw its peak membership period with the baby boom generation. Skill awards were introduced as requirements for advancement and less emphasis was placed on outdoor skills in the first three ranks.

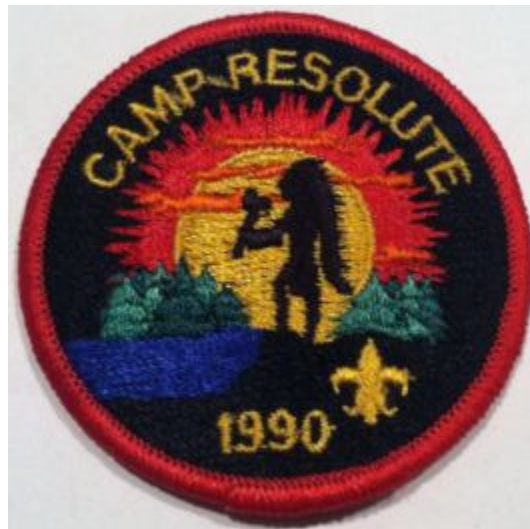
**Big Bowline**— You and your patrol will have to use all of your skills to tie a bowline with a monstrous rope, while keeping two hands on the rope at all times.

**Pet Rock** – Create your own pet rock. Name it and learn to care for it.

**T-shirt Tie Dye** – Create your own groovy psychedelic t-shirt. Can you dig it?

**Skill Award Relay** – Run through various requirements found in the Physical Fitness and communications skill award. Do you know the proper way to answer a phone? You will learn.

# 2019 Camp Resolute 100<sup>th</sup> Anniversary Camporee



## 4. 80's – 90's

### Location: Scoutcraft Area (Mohawk)

Scouting eliminated skill awards in the 80's and refocused the program on outdoor skills. The uniform was redesigned by Oscar de la Renta, and Venture crews and Varsity Scouts made their debut.

**Poison** – An ancient game that became popular at Camp Resolute in the 1980's. Avoid the circle in the middle while joined by hand with your patrol mates.

**Log Lift** – One of the most popular events during the Camp Resolute Woodsman's Meet, throw a rope over a branch, tie a timber hitch around a log and hoist it in the air with the rope. Tie off the rope to a stake using a clove hitch. Fastest time gets the win.

**Chernobyl** – Remove the toxic waste without touching it. It takes a steady hand and teamwork, teamwork, teamwork.

**Do You Believe In Miracles?** – How many patrol members can you get onto the platform and stay there for 10 seconds? In 1980, the US Olympic Hockey Team got 21 up there.

**DaVinci Bridge** – Build a bridge—and have it support your patrol leader or Scoutmaster—without ropes, nails, screws, glue, saws, or axes. The bridge will be held together using only friction.

# 2019 Camp Resolute 100<sup>th</sup> Anniversary Camporee

## 5. Current Era

**Location:** Parade Field/Waterfront/Lower Dining Hall

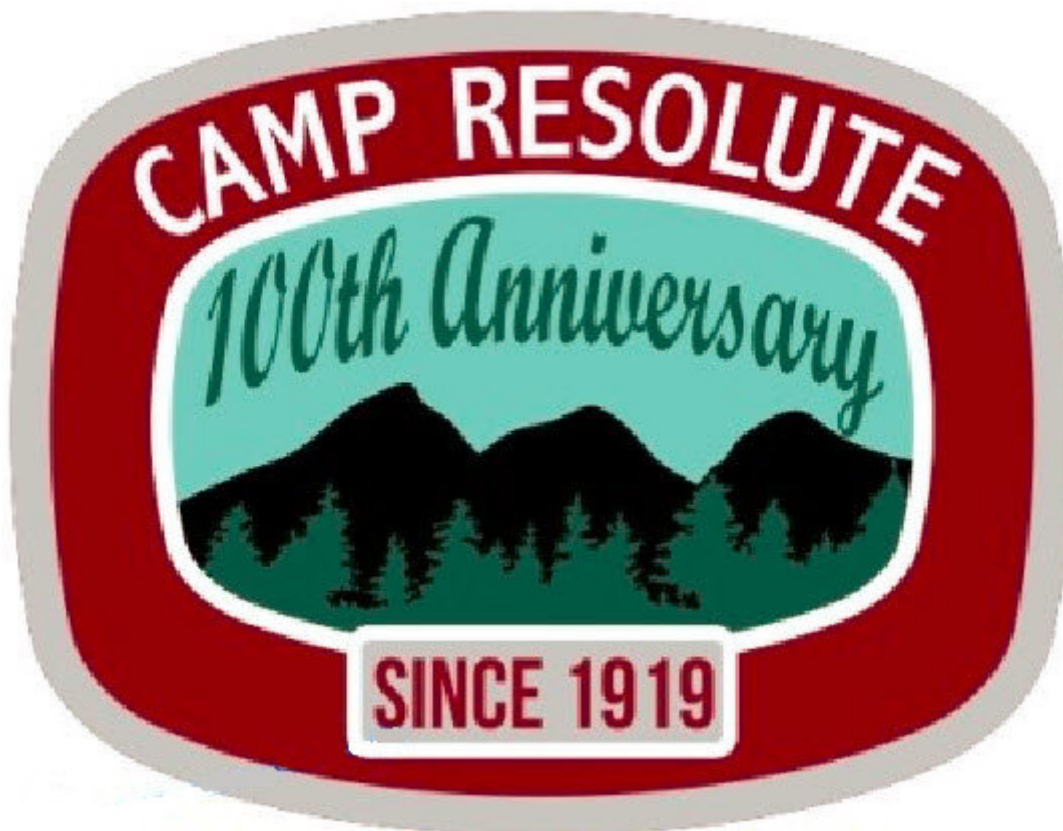
You already know what the Scouting program offers today. The 2000's saw the electronic communications boom, the internet in widespread use, smart phones and mp3 players. Scouting welcomed girls into the program for the first time two years ago, joining most other Scouting nations.

**Big Clove Hitch** – You probably know how to tie a clove hitch. But can your patrol tie one with a massive rope from a distance of 10 feet? Sure, you can.

**Smart Phone Orienteering** – Using your smart phone, follow the orienteering course to spell out the correct 7-letter word. You have probably never heard of the word before, but it will be a word

**Merit Badge ID** – From the 2015 Camp Resolute Challenge, how many merit badges can you identify in a given time? Should be all of them.

**Angry Birds** – Knock down the structures with the slingshot. Simple as that. Each patrol gets 4 shots to do as much damage as possible.



# 2019 Camp Resolute 100<sup>th</sup> Anniversary Camporee

